



Manging Risk on the Electricity network

A reflection on risk thinking through review of the EEA guide for Manual Re-closing of High Voltage Circuits Following a Fault



The EEA Safety, Standards and Procedures Group (SSPG) regularly review guides.

EEA guide for Manual Re-closing of High Voltage Circuits Following a Fault was last reviewed during 2014 and was due for an update.

However Members had also requested guidance around management of hazards around lines

THE REVIEW PROCESS



WAS THE RISK MANAGEMENT PROCESS THE SAME WHEN RE-CLOSING A HV CIRCUIT AND RESPONDING TO A NETWORK HAZARD?

- *Manual closing of a circuit breaker following a fault **and** determining the best course of action to respond to a hazard seemed to require a similar risk thinking approach.*
 - *Evidence needed to be gathered*
 - *A rigorous evaluation process was required*
 - *Wrong decisions lead to high consequences*
 - *The Energisation and the De-Energisation process managed the same risks*



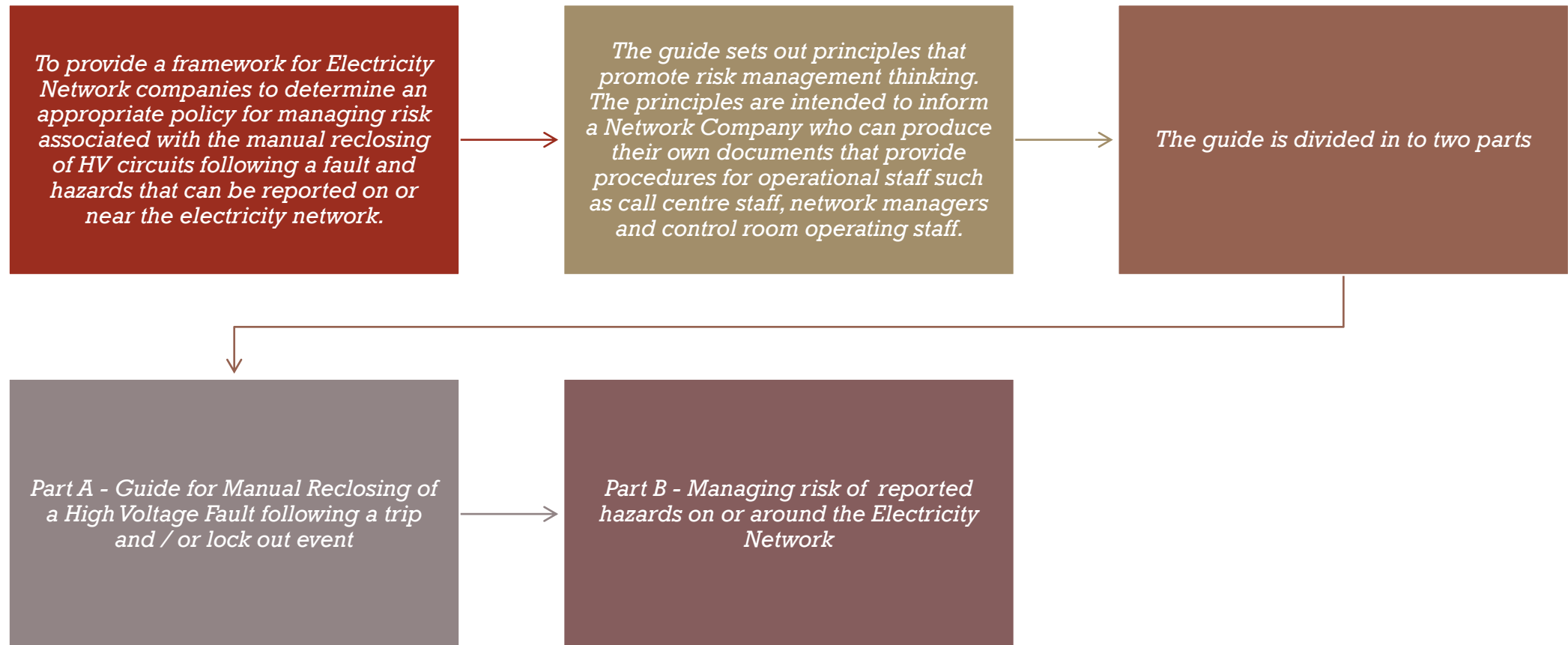
**SIMILAR RISK
THINKING WAS
EVIDENT SO THE SSPG
DECIDED TO COMBINE
IN TO ONE GUIDE**

*The EEA guide for Manual Re-closing of High Voltage
Circuits Following a Fault becomes;*

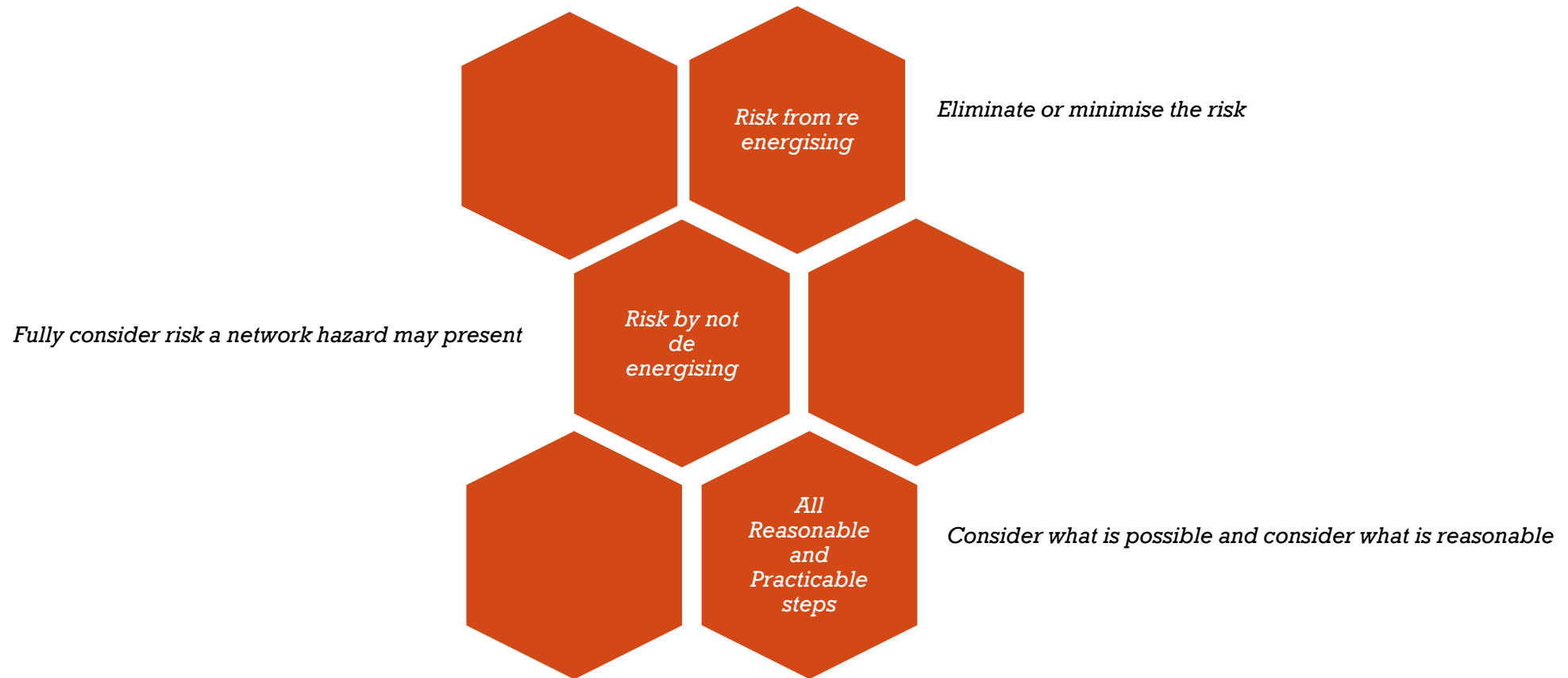
**Network Fault Management
– Guide to Manual Reclosing
and Risk Management of
reported hazards**



THE PURPOSE OF THE GUIDE



A NETWORK COMPANY NEEDS TO FULLY CONSIDER THE RISK



AND THEN DEVELOP THEIR OWN PROCEDURES

- *The guide provides guidance for companies to develop their own procedures*
- *Those procedures will be tailored to the network specific topology*
- *Procedures that align with how the network company works*

A network company can pre-assess their network and produce a risk profile for each feeder !



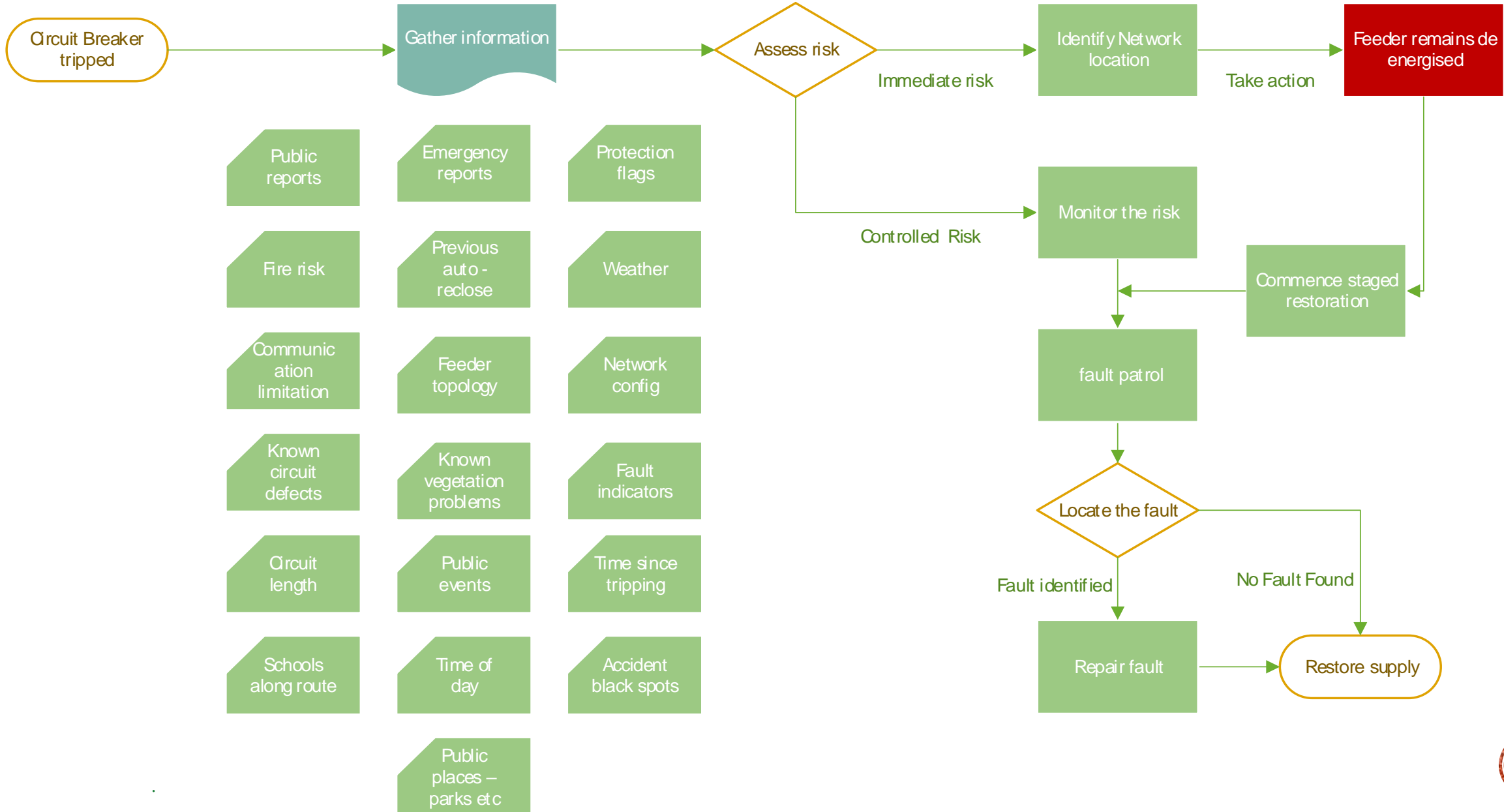
PART A

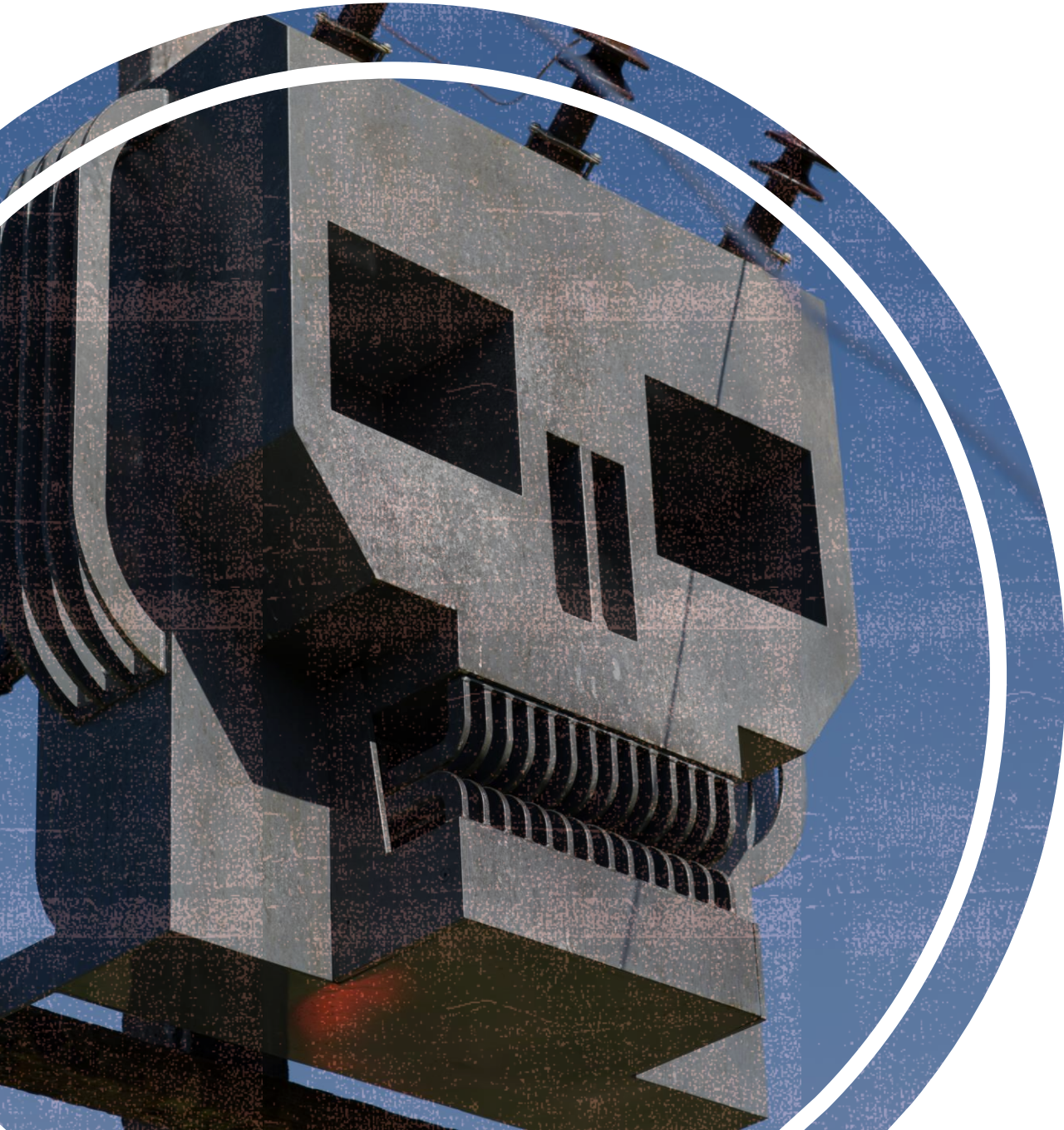
GUIDE FOR MANUAL RECLOSING OF HIGH VOLTAGE CIRCUITS FOLLOWING A FAULT

- *Following operation Of a HV protective Device*
- *Gather General information*
- *Gather Network Information*
- *Assess the risk*



The journey to the RIGHT decision is all about a procedure.....





MAKE THE CORRECT DECISION DON'T LET RISK HAVE THE BENEFIT OF DOUBT

- *Urban areas : Do not attempt a manual close*
- *A minimum wait time of 15 Min but that's just a starting point – extended allowance should be the norm*
- *Unknown situations should always assume worst case outcomes*
- *Be reasonable: consider what that means when applied to doubt*



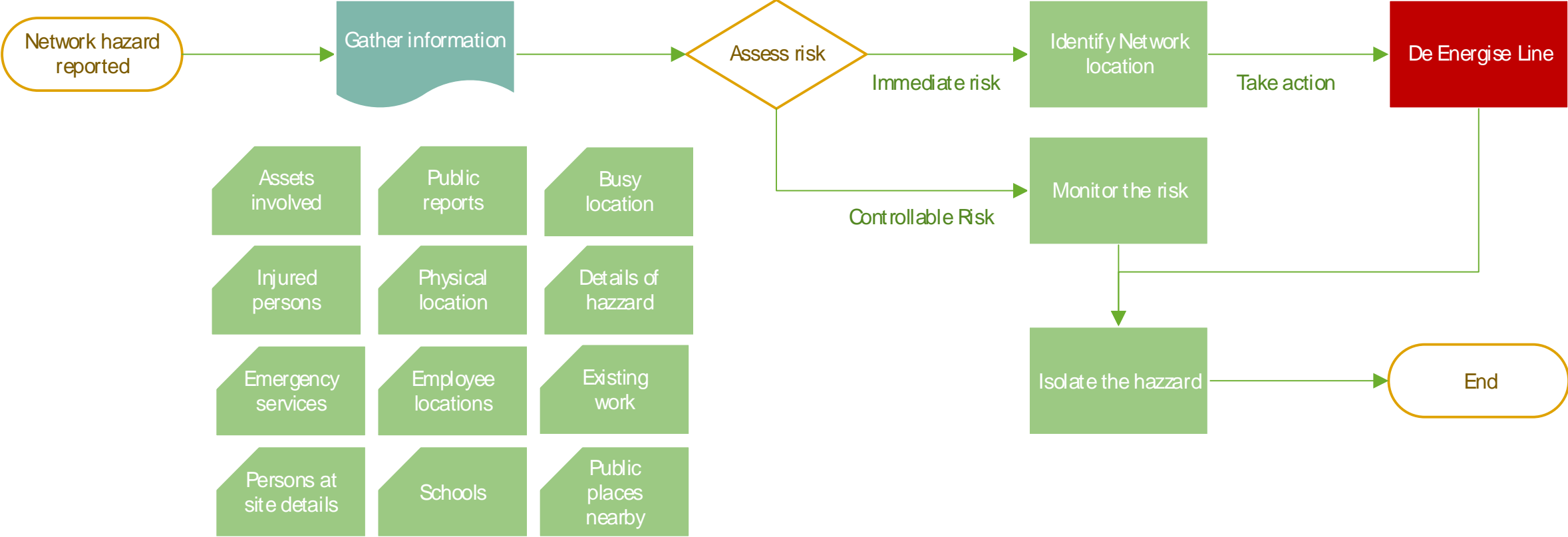
PART B

MANAGING A REPORT OF A HAZARD

- *All reports of hazards on the Electricity Network must be risk assessed*
- *Make all reasonable endeavours to gather enough evidence*
- *Identify the risk*
- *And be prepared to take action*



THE JOURNEY TO THE RIGHT DECISION IS ALL ABOUT A PROCEDURE.....





MAKE THE CORRECT DECISION DON'T LET RISK HAVE THE BENEFIT OF DOUBT

- *How fast can a hazard be eliminated*
- *The greater the potential for harm the greater the action required*
- *Reported hazards with High Consequence then likelihood should not be a major factor*
- *A Network company must consider what is possible in their circumstances to preserve public, worker and property safety*



Questions and discussion

